

The H Frame Range

the base solution for mounting your services on the roof

The ILP H Frame foot is a convenient, adaptable and low-cost answer for supporting hardware & roof apparatus or the furnishings of a plant room. This may surround projects involving pipe work, duct work, cable trays and/or air conditioning equipment

ILP assists you in keeping your installations low cost by recommending you source your own strut. Consequently, the H Frame feet are manufactured with either a pre-moulded 41mm² or 50mm² Core, so when formulating frameworks on site, having both these options readily available, ensures your project is consistently flexible

Where a greater load spread is required you can upgrade to a 500mm x 500mm square foot or for securing your Ductwork and light weight plant why not use our 12kg or 25kg foot for extra ballast

One of the greatest features of this product, is that it is moulded as a ONE piece item. Therefore, no fiddly plastic inserts or awkward rubber pads are required. They are despatched as individual products, therefore, there is NO wasted packaging or assembly kits surplus to requirements during installations

Even our standard 350 foot has a substantial 5.2kg weight – giving it greater stability compared to others available on the market

The 'Heavy Ballast' Foot



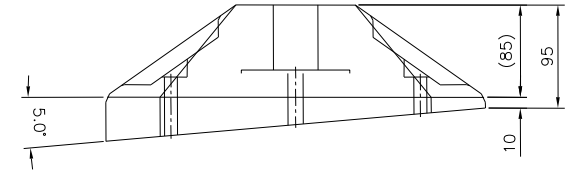
Issue 02 – Sept 2014

ilp
Support Systems

100% UK Manufacture
100% UK Sourced Materials



The 'Angled' Foot @ 2.5° & 5°



For sloped roofs, the 'Angled' Feet have again been moulded uniquely as one component in either 2.5° or 5° angles



Product Code	Model	Foot Size (mm ²)	Height (mm)	Max Loading per Foot (kg)	Weight per foot (kg)	Load Bearing (Steel Plate)	Depth of core
COMBI 01	Support Systems 350	350	95	200	5.2	95mm ² x 4mm	60mm
COMBI 02	Angled Foot 350 @ 2.5°	350	95-110	200	6.6	95mm ² x 4mm	60mm
COMBI 03	Angled Foot 350 @ 5°	350	95-130	200	7.2	95mm ² x 4mm	60mm
COMBI 27	Support Systems 350 - 12kg Heavy Ballast	350	165	200	12	95mm ² x 4mm	60mm
COMBI 04	Support Systems 500	500	130	250	12.9	160mm ² x 4mm	90mm
COMBI 05	Angled Foot 500 @ 2.5°	500	130-153	250	16.1	160mm ² x 4mm	90mm
COMBI 06	Angled Foot 500 @ 5°	500	130-176	250	17.5	160mm ² x 4mm	90mm
COMBI 26	Support Systems 500 - 25kg Heavy Ballast	500	195	250	25	160mm ² x 4mm	90mm

MATERIAL SPECIFICATION

The rubber is milled, sieved & graded Styrene Butadiene rubber (Black SBR) in reclaimed truck/lorry tyre shred & granular form. Bound together using a 8% ratio of moisture curing Polyurethane Pre-Polymer
UV Resistant Recycled Rubber
Working Temperature Range: -35°C to +80°C
All dimensions +/- 2mm. Weight per unit +/- 3%